



Movexx **T1500-D**  
PARTS & OPTIONS  
**2020** v2

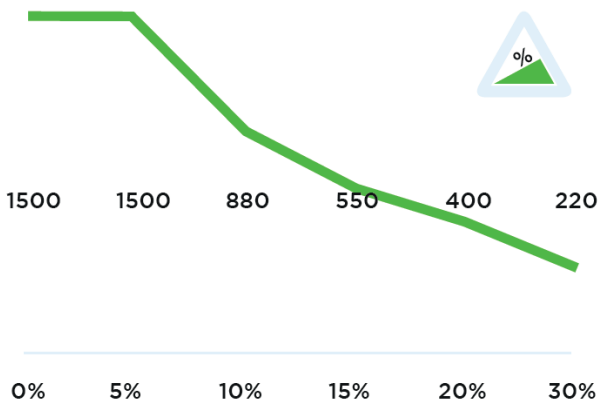
## Specifications

### Technical details

<b>Frame</b>	Steel, powder coated
<b>Motor</b>	24V DC, 600W, 100 rpm
<b>Weight</b>	180 kg (296 lbs)
<b>Max. pulling force</b>	1800 N
<b>Weight trailer</b>	1500 kg (3306.9 lbs)
<b>Battery</b>	Exchangeable battery pack
<b>Speed Max.</b>	4,7 km/h (2.9 mph)
<b>Drive wheels</b>	Full rubber Ø 250 x 80 mm (9.8 x 3.1 in)
<b>Adze height</b>	770-1158 mm (30.3 - 44.8 in)
<b>Noise level</b>	68,5 dB
<b>To use from</b>	-10° / 40° C (14° / 104° F)

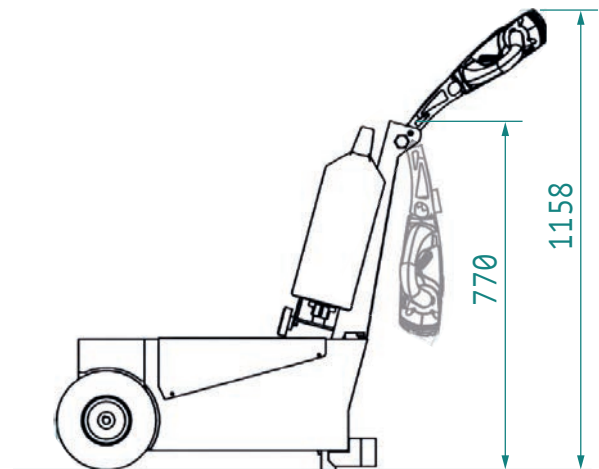
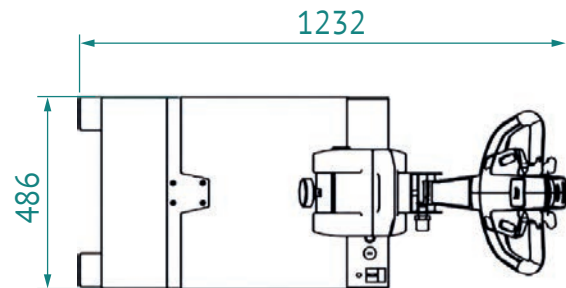
© 2020 Movexx International B.V. The images shown are used for illustration purposes only and may differ from the products indicated. No rights can therefore be derived from it. Printing errors are subjected to change. The datasheet is the confidential product of Movexx International B.V. and no portion of this datasheet may be copied, performed, or redistributed without the express written authority of Movexx International B.V.

## Pulling power (in kg)



Measured with a trolley with 2 swivel wheels and 2 fixed castors. Wheel Ø 160 mm.

## Dimensions



## Standard parts



Motor 600W / 100rpm  
(6911413X) with brake  
**Item number M2098**



LED battery indicator  
**Item number M0123**



Charger (external)  
AGM battery 24V / 5A  
**Item number OPT0009**



Battery AGM-VRLA green  
24V / 22Ah  
**Item number OPT0110**



Drive wheel, full rubber  
Black Ø 250 x 80 mm  
**Item number M0248**



Castor wheel  
Black Ø 125 mm  
**Item number M0110**

## Standard parts



Adjustable tiller head  
**Item no M1002-0100**



Belly button RED  
**Item number M0121-BBUT**



2 programmable speeds

## Options



Extra plug to recharge  
the battery  
*for on-machine battery  
charging*  
**Item number OPT0001**



UPGRADE:  
(only with new machines)  
Drive wheel full rubber,  
non-marking  
Gray 2x Ø 250 x 80 mm  
**Item number OPT0359**

## Options



Horn 90dB for  
steel tiller head supp.  
M1002-0100  
**Item number OPT0057**



Horn 103dB  
**Item number OPT0059**



Emergency stop complete  
**Item number OPT0063**



Strobe light for  
steel tiller head supp.  
M1002-0100  
**Item number OPT0065**

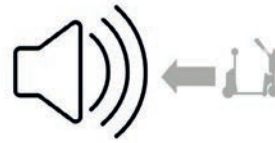


Strobe light on pole  
**Item number OPT0124**



Audio signal  
(while driving)  
**Item number OPT0253**

## Options



Audio signal  
(driving backward)  
**Item number OPT0254**



Remote set  
4 channel, 2,4 GHz  
**Item number OPT0505**



Hour tracker  
**Item number OPT0056**



Antistatic strip  
**Item number OPT0058**



Code lock  
**Item number OPT0068**

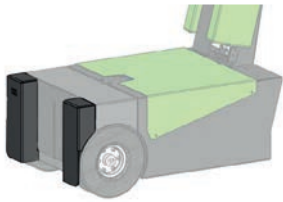


Document holder for  
steel tiller head supp.  
M1002-0100  
**Item number OPT0053**

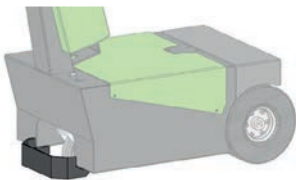
## Options



Safety fender  
**Item number OPT0167**



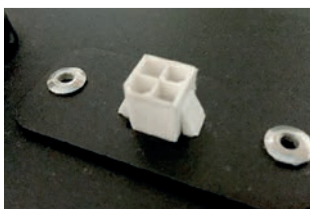
Drive wheel safety fender  
**Item number OPT0094**



Cover for caster  
**Item number OPT0130**



Preparation electric hook  
**Item number OPT0143**



Diagnostic connector  
**Item number OPT0270**



Ignition key (unequal)  
**Item number OPT0145**

## Options



Ignition key 701 (equal)  
**Item number OPT0146**



On/off rotary switch  
**Item number OPT0016**



Parking floorlabel Ø 60 cm  
**Item number OPT0245**



Customized programming  
*Please indicate specific settings*  
**Item number OPT0170**



Programmer for Italsea  
**Item number D0003**



Maximum weight  
**Item number OPT0172**

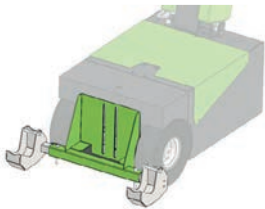
## Options



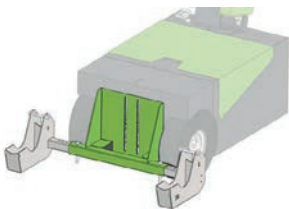
U-frame for waste container 1000 l. / 1100 l.  
**Item number OPT0088**



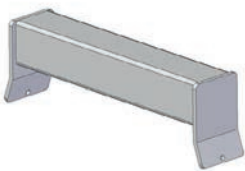
Adaptor for 2 wheel bins  
**Item number OPT0151**



Adaptor for shopping trolley (90°)  
**Item number OPT0324**



Adaptor for airport trolley (90°)  
**Item number OPT0327**



Welding part for trolley (profile 50 x 50 mm)  
**Item number OPT0032**



Bolt-on part for trolley (profile 50 x 50 mm)  
**Item number OPT0033**

## Options



Pushbar  
**Item number OPT0048**



Urgent order purchase  
**Item number SPOED**

## Batteries and Chargers



Battery AGM-VRLA green 24V / 22Ah  
**Item number OPT0110**



Charger (external) AGM battery 24V / 5A  
**Item number OPT0009**



Battery Lithium green (LiFePO4) 25,6V / 36Ah  
**Item number OPT0106**



## Batteries and Chargers



Charger (external)  
Lithium battery 25,6V / 10A  
**Item number OPT0013**



UPGRADE:  
(only with new machines)  
Battery Lithium (LiFePO4)  
+ charger  
**Item number OPT0107**



Wall mounted AGM  
charger, incl. AGM  
charger 24V / 5A  
**Item number OPT0015**



Wall mounted Lithium  
charger, incl. Lithium  
charger 25,6V / 10A  
**Item number OPT0023**



Charging station Lithium  
(5x), incl. Lithium  
charger 25,6V / 10A  
**Item number OPT0029**



Charging station AGM  
(5x), incl. AGM  
charger 24V / 5A  
**Item number OPT0039**

## Batteries and Chargers



UPGRADE:  
(only with new machines)  
Wall mounting for charger  
(for AGM or Lithium)  
**Item number OPT0261**

## Adapters



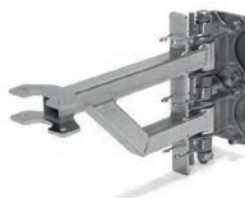
Base part hook 90°  
**Item number H7030**



Base part hook 90°  
(double spring)  
**Item number H7040**



Base part HD hook 90°  
(lowered)  
**Item number H7070**



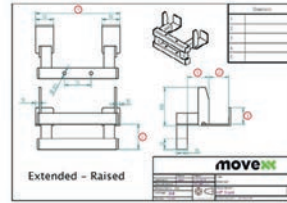
Base part HD hook 90°  
(raised)  
**Item number H7080**

## Adaptors

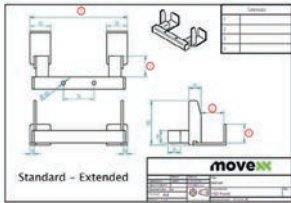


Angle limitation hook 90°  
**Item number OPT0244**

## Adaptors



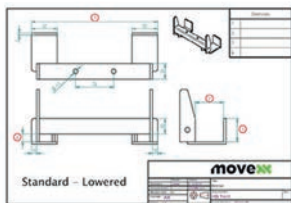
Customized hook  
(extended/raised)  
*Please complete  
corresponding sheet*  
**Item number HF5000**



Customized hook  
*Please complete  
corresponding sheet*  
**Item number HA5000**



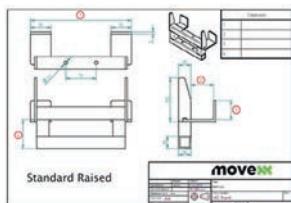
Hitchball Ø 50mm  
(incl. adapter)  
**Item number H0068**



Customized hook (low)  
*Please complete  
corresponding sheet*  
**Item number HB5000**



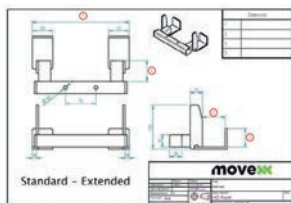
Hook for LKE platform-  
wagon (type X)  
**Item number H0076**



Customized hook (raised)  
*Please complete  
corresponding sheet*  
**Item number HC5000**



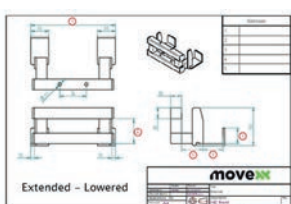
Hook K-Hartwall dolly  
(DOS1617/1636, 90°)  
**Item number H0083**



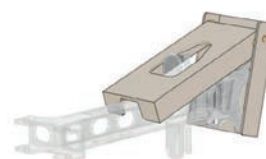
Customized hook  
(extended)  
*Please complete  
corresponding sheet*  
**Item number HD5000**



Electric lifting module  
for hook  
**Item number OPT0050**



Customized hook  
(extended/low)  
*Please complete  
corresponding sheet*  
**Item number HE5000**



Hook locking system  
stainless steel  
**Item number OPT0012**



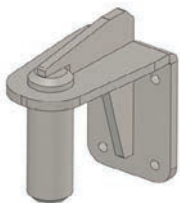
## Adaptors



Electric locking module  
for hook  
**Item number OPT0129**



Pen for drawbar Ø16  
**Item number H0064**



Pen for drawbar Ø35  
**Item number H0144**



Pen for drawbar Ø20  
**Item number H0161**



Pen for drawbar Ø25  
**Item number H0166**

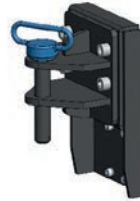


Trailer coupling, pen Ø25  
**Item number H0062**

## Adaptors



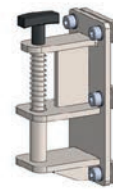
Trailer coupling, pen Ø32  
**Item number H0146**



Trailer coupling, pen Ø25  
**Item number H0149**



Towbar for Movexx  
e-frame  
(suitable for OPT0067)  
**Item number H0070**



Spring hitch, pen Ø16  
**Item number H0120**



Pen for drawbar Ø15  
**Item number H0071**



Pen for drawbar Ø10  
**Item number H0072**

## Adapters



Folding hook  
for flower trolley  
**Item number OPT0099**



Folding hook Ø16  
**Item number H0128-D16**



Folding hook Ø20  
**Item number H0128-D20**



Folding hook Ø25  
**Item number H0128-D25**



Folding hook Ø27  
**Item number H0128-D27**

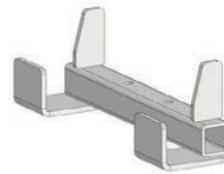


Folding hook Ø32  
**Item number H0128-D32**

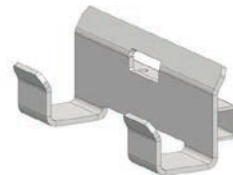
## Adapters



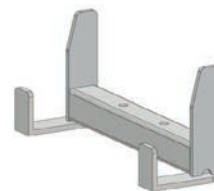
Folding hook Ø35  
**Item number H0128-D35**



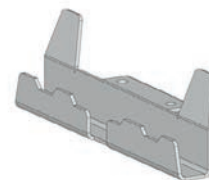
HA270.43.40.0.0  
Hook for 40 mm profile  
(K-Hartwall pallet trolley;  
DOS1870)  
**Item number H0003**



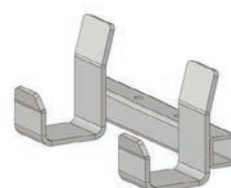
HA245.53.45.15.0  
Hook for 50 mm profile  
(heavy duty)  
**Item number H0004**



HA250.43.35.0.0  
Hook for 40 mm profile  
**Item number H0051**



HA250.23.27.0.0  
Hook for 20 mm profile  
**Item number H0067**

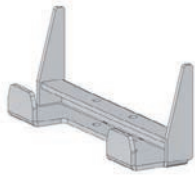


HB245.60.45.30.0  
Hook for FEIL plastic floor  
trolley  
**Item number H0092**

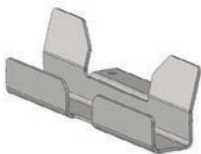
## Adapters



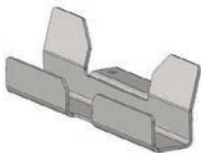
HC250.28.25.0.0  
Hook for 25 mm profile  
**Item number H0094**



HA250.33.30.0.0  
Hook for 30 mm profile  
**Item number H0095**



HA250.35.30.0.0  
Hook for 30 mm profile  
(furniture trolley)  
**Item number H0097**



HF242.23.30.15.20  
Hook for 20 mm profile  
(hospital logistics)  
**Item number H0116**

## Most common spareparts



Charger (external)  
AGM battery 24V / 5A  
**Item number OPT0009**



Battery Lithium green  
(LiFePO4) 25,6V / 36Ah  
**Item number OPT0106**



Charger (external)  
Lithium battery 25,6V / 10A  
**Item number OPT0013**



Battery guide  
(stainless steel)  
**Item number M0482**



Battery connector SB50  
**Item number M0105**



Battery AGM-VRLA green  
24V / 22Ah  
**Item number OPT0110**



Belly button RED  
**Item number M0121-BBUT**

## Most common spareparts

## Most common spareparts



Switch buttons (2x) green  
**Item number**  
**M0121-KNOP-GROEN**



Switch tiller head  
excl. buttons  
**Item number**  
**M0121-FLIPPER**



Feather/shaft Throttle  
**Item number** **M0121-4**



Switch FAST/SLOW  
tiller head green  
**Item number**  
**M0121-SPEED-GROEN**



Switch ON/OFF  
tiller head green  
**Item number**  
**M0121-AANUIT-GROEN**



Plain sleeve bearing  
Ø8 / 12 x 6, 16 x 2mm  
**Item number** **M4038**

## Most common spareparts



Locking pin  
M16 x 1,5 mm  
**Item number** **M0001**



Coverplate tiller head  
**Item number** **M0898**



Torsion spring for hook  
**Item number** **M0116-SP**



Italsea drive controller  
in 24V / 36 bat,  
in 35A / I<sub>max</sub> 90A  
**Item number** **M1124-SP**



Carbon brushes (set of 4)  
for Motor 600W  
**Item number** **M1037**



LED battery indicator  
**Item number** **M0123**

## Most common spareparts



Cable harness complete  
**Item number M1127-M050**



Fuse 5A  
**Item number M0506**



Fuse Maxi 80A  
**Item number M0191**

## Most common spareparts



Drive wheel, full rubber  
Black Ø 250 x 80 mm  
**Item number M0248**



Drive wheel  
Full rubber, non-marking  
Gray Ø 250 x 80 mm  
**Item number M0115**



Castor wheel  
Black Ø 125 mm  
**Item number M0110**



# applications



**moveXX**  
driven by brain power

Generatorstraat 17-19  
3903 LH Veenendaal  
The Netherlands

T +31 (0)318 519900  
E info@movexx.com  
W www.movexx.com

