



Movexx **T1500** M080
PARTS & OPTIONS
2021 v1

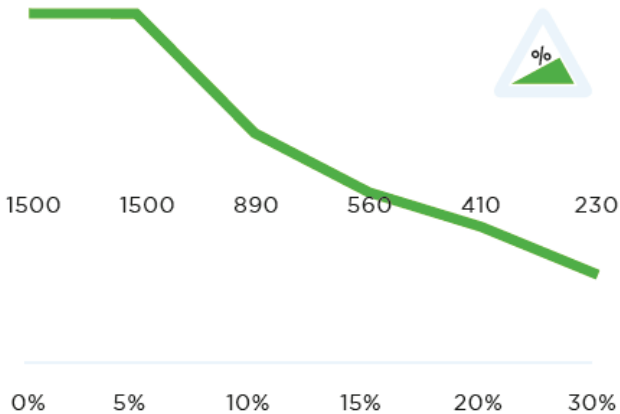
Specifications

Technical details

Frame	Steel, powder coated
Drive	24V DC, 600W, 100 rpm
Weight	105 kg (231.5 lbs)
Max. pulling force	1800 N
Weight trailer	1500 kg (3306.9 lbs)
Battery	Exchangeable battery pack
Speed Max.	4,7 km/h (2.9 mph)
Drive wheels	Full rubber Ø 250 x 80 mm (9.8 x 3.1 in)
Adze height	880-1144mm (34.3-45 in)
Noise level	68,5 dB
To use from	-10° / 40° C (14°/ 104 F)

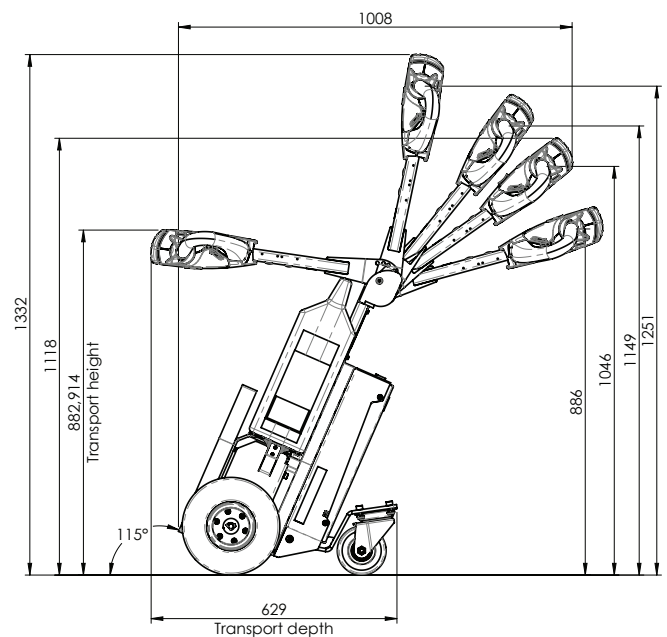
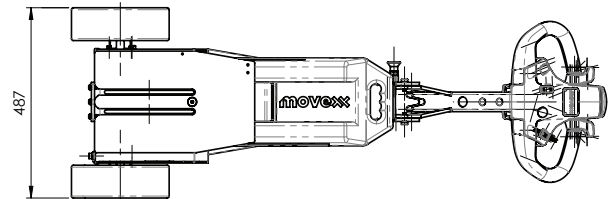
© 2021 Movexx International B.V. The images shown are used for illustration purposes only and may differ from the products indicated. No rights can therefore be derived from it. Printing errors are subject to change.

Pulling power (in kg)



Measured with a trolley with 2 swivel wheels and 2 fixed castors. Wheel Ø 160 mm.

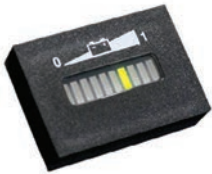
Dimensions



Standard parts



Motor 600W / 100rpm
(6911413X) with brake
Item number M2098



Curtis battery indicator
Item number M3165



Charger (external) for
Lithium battery, 25,6V / 10A
Item number OPT0013



Battery Lithium green
(LiFePO4) 25,6V / 20Ah
Item number 335474



Drive wheel, full rubber
Black Ø 250 x 80 mm
Item number M0248



Adjustable tiller head
Item number 335830

Standard parts



Belly button RED
Item number M0121-BBUT



Curtis drive controller
DC 24V,
Inom 50A, Imax 110A
Item number M3162



2 programmable speeds

Options



Extra plug to recharge
the battery
*for on-machine battery
charging*
Item number OPT0001



Set Drive wheels
full rubber, non-marking
Gray 2x Ø 250 x 80 mm
Item number 335572

Options



Set Drive wheels
foam filled
Black 2x Ø 250 x 80 mm
Item number 335573



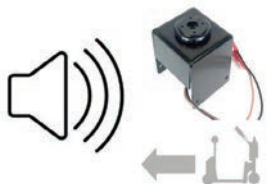
Set Drive wheels
foam filled, non-marking
Gray 2x Ø 250 x 80 mm
Item number 335574



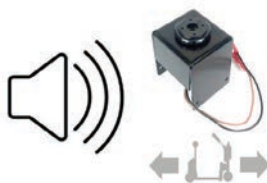
Horn 90dB for
steel tiller head supp.
Item number OPT0057



Audio signal + Horn 90 dB
(while driving forward)
Item number 335409



Audio signal + Horn 90 dB
(while driving backward)
Item number 335408



Audio signal + Horn 90 dB
(while driving)
Item number 335449

Options



Horn 103dB
Item number 335396



Emergency stop complete
Item number 335601



Strobe light
(only while driving)
Item no. 335398



Strobe light
(continuous)
Item no. 335399



Remote set (**without**
flippers switch off)
4 channel, 2,4 GHz
Item number 335391



Remote set (**with**
flippers switch off)
4 channel, 2,4 GHz
Item number 335643

Options



Hour tracker
Item number 335394



Antistatic strip
Item number OPT0058



Code lock
Item number OPT0068



Document holder for
steel tillerhead supp.
Item number OPT0053

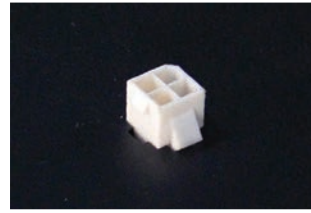


Storage system
(incl. snap hooks) for
steel tiller head supp.
Item number OPT0482



Preparation electric hook
Item number 335403

Options



Diagnostic connector
Item number 335452



Ignition key (unequal)
Item number OPT0145



Ignition key 701 (equal)
Item number OPT0146



On/off rotary switch
Item number OPT0016



Parking floorlabel Ø 60 cm
Item number OPT0245



Customized programming
*Please indicate
specific settings*
Item number OPT0170

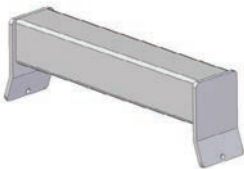
Options



Programmer for Curtis
Item number M3167



Frame for
4-wheel waste container
Item number OPT0085



Welding part for trolley
(profile 50 x 50 mm)
Item number OPT0032



Bolt-on part for trolley
(profile 50 x 50 mm)
Item number OPT0033



Attachment for trolley
Caddie/Wanzl
Item number OPT0040

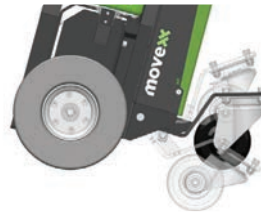


Urgent order purchase
Item number SPOED

Options



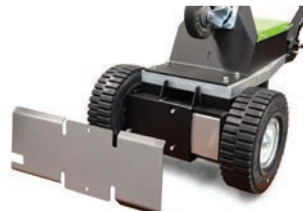
Frame for
770 l. and 240 l. container
Item number OPT0375



Tilting assistant
Item number 335309



Rigid Caster plate
machine 15°
Item number 335315



Protective cover
Item number OPT0497

Batteries and Chargers



Battery Lithium green
(LiFePO4) 25,6V / 36Ah
Item number OPT0106

Batteries and Chargers



Charger (external)
Lithium battery 25,6V / 10A
Item number OPT0013



Wall mounted Lithium
charger, incl. Lithium
charger 25,6V / 10A
Item number OPT0023

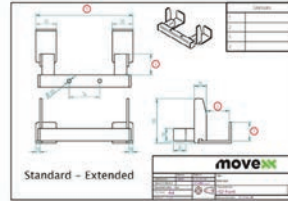


Charging station Lithium
(5x), incl. Lithium
charger 25,6V / 10A
Item number OPT0029

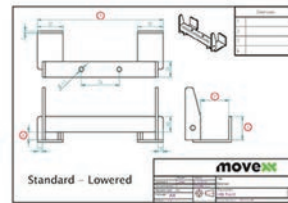
Adapters



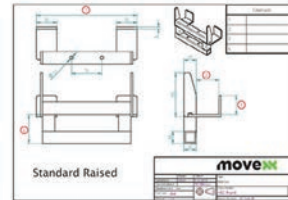
Angle limitation hook 80°
Item number OPT0218



Customized hook
*Please complete
corresponding sheet*
Item number HA5000



Customized hook (low)
*Please complete
corresponding sheet*
Item number HB5000

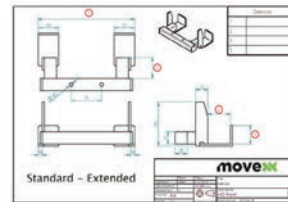


Customized hook (raised)
*Please complete
corresponding sheet*
Item number HC5000

Adapters



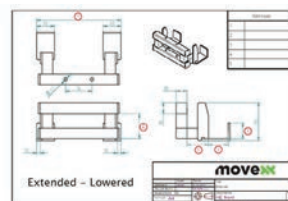
Base part HD hook 15°
(lowered)
Item number H7050



Customized hook
(extended)
*Please complete
corresponding sheet*
Item number HD5000

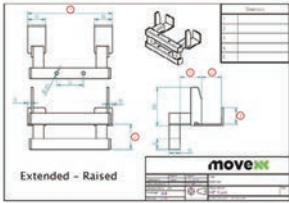


Base part HD hook 15°
(raised)
Item number H7060



Customized hook
(extended/low)
*Please complete
corresponding sheet*
Item number HE5000

Adapters



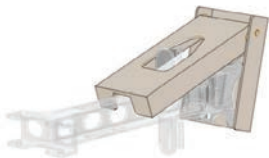
Customized hook
(extended/raised)
*Please complete
corresponding sheet*
Item number HF5000



Hook for LKE platform-
wagon (type X)
Item number H0076



Hook K-Hartwall dolly
(DOS1617/1636, 25°)
Item number H0086



Hook locking system
Item number OPT0012



Electric height adjustment,
Stroke 100 mm,
Actuator 900 N
Item number OPT0506



Electric height adjustment,
Sprung, Stroke 100 mm,
Actuator 900 N
(gas spring 200 N)
Item number 336315

Adapters



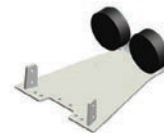
Electric locking module
for hook
Item number 335887



Clamping hook (HD)
*(required with
335968 or 335975)*
Item number 335482



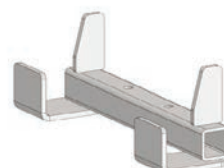
Set 1 (0 - 60mm)
Item number 335968



Set 2 (40 - 100mm)
Item number 335975

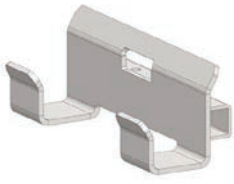


Tilting clamping hook for
wooden profile 145x20mm
Self-aligning connection,
pivoting angle 15° up/down
Item number 335816

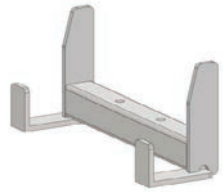


HA270.43.40.0.0
Hook for 40 mm profile
(K-Hartwall pallet trolley;
DOS1870)
Item number H0003

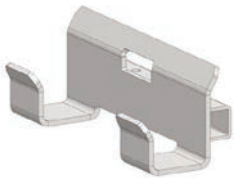
Adapters



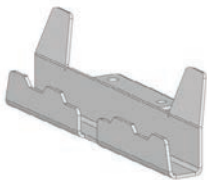
HA245.53.45.15.0
Hook for 50 mm profile
(heavy duty)
Item number H0004



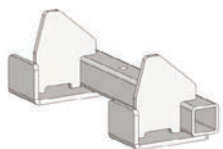
HA250.43.35.0.0
Hook for 40 mm profile
Item number H0051



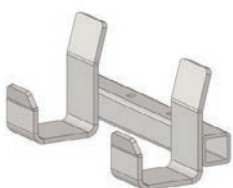
HB245.43.30.5.0
Hook for 40 mm profile
Item number H0054



HA250.23.27.0.0
Hook for 20 mm profile
Item number H0067



HD245.10.35.0.50
Front hook for Hatchery
trolley (EMKA)
Item number H0090

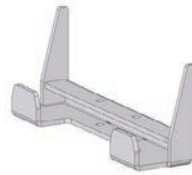


HB245.60.45.30.0
Hook for FEIL plastic floor
trolley
Item number H0092

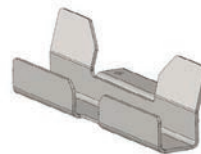
Adapters



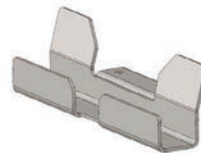
HA250.29.30.0.0
Hook for 25 mm profile
Item number H0094



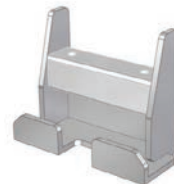
HA250.33.30.0.0
Hook for 30 mm profile
Item number H0095



HA250.35.30.0.0
Hook for 30 mm profile
(furniture trolley)
Item number H0097



HF242.23.30.15.20
Hook for 20 mm profile
(hospital logistics)
Item number H0116



HB135.18.20.35.0
Hook for 15 mm profile
(K-Hartwell dolly 400x600)
Item number H0125

Most common spareparts



Battery Lithium green
(LiFePO4) 25,6V / 20Ah
Item number 335474



Charger (external)
Lithium battery 25,6V / 10A
Item number OPT0013



Battery guide
(stainless steel)
Item number M0482



Battery connector SB50
Item number M0105



Belly button RED
Item number M0121-BBUT



Switch buttons (2x) green
Item number M0121-KNOP-GROEN

Most common spareparts



Switch tillerhead
excl. buttons
Item number M0121-FLIPPER



Feather/shaft Throttle
Item number M0121-4



Switch FAST/SLOW
tillerhead green
Item number M0121-SPEED-GROEN



Switch ON/OFF
tillerhead green
Item number M0121-AANUIT-GROEN



Collar bearing
10 x 18 x 7 mm
Item number M3628



Locking pin
M16 x 1,5 mm
Item number M0001

Most common spareparts



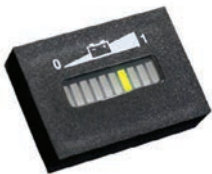
Torsion spring for hook
Item number M0116-SP



Curtis drive controller
DC 24V,
Inom 50A, I_{max} 110A
Item number M3162



Carbon brushes (set of 4)
for Motor 600W
Item number M1037



LED battery indicator
Item number M3165



Cable harness,
universal Curtis
Item number 335406



Fuse 5A
Item number M0506

Most common spareparts



Fuse Maxi 80A
Item number M0191



Drive wheel, full rubber
Black Ø 250 x 80 mm
Item number M0248



Drive wheel
full rubber, non-marking
Gray Ø 250 x 80 mm
Item number M0115



Drive wheel, foamed at 2b
Black Ø 250 x 80 mm
Item number M0091



Castor wheel
Black Ø 125 mm
Item number M4041

applications



movexx
driven by brain power

Generatorstraat 17-19
3903 LH Veenendaal
The Netherlands

T +31 (0)318 519900
E info@movexx.com
W www.movexx.com

