

**movexx**  
driven by brain power



Movexx **T1000** M090  
PARTS & OPTIONS

**2021** v1



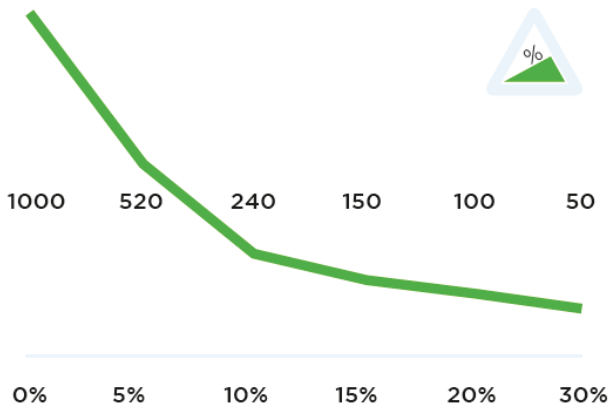
## Specifications

### Technical details

<b>Frame</b>	Steel, powder coated
<b>Drive</b>	24V DC, 300W, 100 rpm
<b>Weight</b>	40 kg (88.2 lbs)
<b>Max. pulling force</b>	800 N
<b>Weight trailer</b>	Max. 1000 kg (2204.5 lbs)
<b>Battery</b>	Exchangeable battery pack
<b>Speed Max.</b>	5 km/h (3.1 mph)
<b>Drive wheels</b>	Full rubber Ø 250 x 80mm (9.8 x 3.1 in)
<b>Adze height</b>	831 - 985 mm (32.7 - 38.8 in)
<b>Noise level</b>	63,8 dB
<b>To use from</b>	-10 / 40° C (14°/ 104° F)

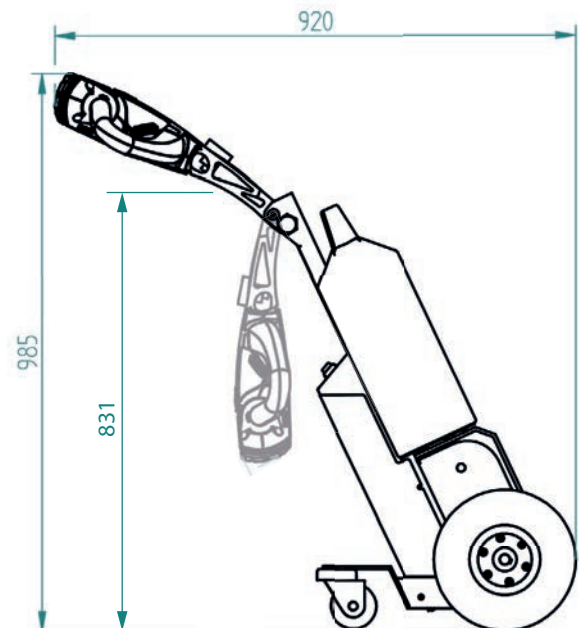
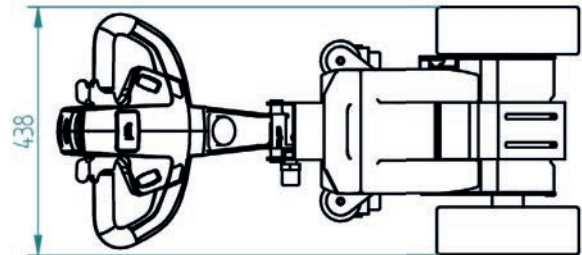
© 2021 Movexx International B.V. The images shown are used for illustration purposes only and may differ from the products indicated. No rights can therefore be derived from it. Printing errors are subjected to change. The datasheet is the confidential product of Movexx International B.V. and no portion of this datasheet may be copied, performed, or redistributed without the express written authority of Movexx International B.V.

## Pulling power (in kg)

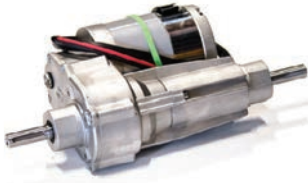


Measured with a trolley with 2 swivel wheels and 2 fixed castors. Wheel Ø 160 mm.

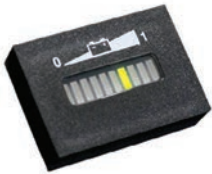
## Dimensions



## Standard parts



Motor 300W / 100rpm  
(6911345X) without brake  
**Item number M1032**



Curtis battery indicator  
**Item number M3165**



Charger (external) for  
Lithium battery, 25,6V / 10A  
**Item number OPT0013**



Battery Lithium green  
(LiFePO4) 25,6V / 20Ah  
**Item number 335474**



Drive wheel, full rubber  
Black Ø 250 x 80mm  
**Item number M0248**



Adjustable tillerhead  
**Item no M1002-0100**

## Standard parts



Belly button RED  
**Item number M0121-BBUT**



Curtis drive controller  
DC 24V,  
Inom 30A, Imax 50A  
**Item number M3161**



2 programmable speeds

## Options



Extra plug to recharge  
the battery  
*for on-machine battery  
charging*  
**Item number OPT0001**



Set Drive wheels  
full rubber, non-marking  
Gray 2x Ø 250 x 80 mm  
**Item number 335572**

## Options



Set Drive wheels,  
foam filled  
Black 2x Ø 250 x 80 mm  
**Item number 335573**



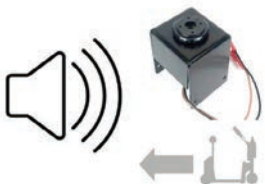
Set Drive wheels,  
foam filled, non-marking  
Gray 2x Ø 250 x 80 mm  
**Item number 335574**



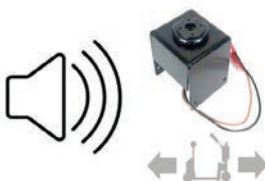
Horn 90dB for  
steel tiller head supp.  
**Item number OPT0057**



Audio signal + Horn 90 dB  
(while driving forward)  
**Item number 335409**



Audio signal + Horn 90 dB  
(while driving backward)  
**Item number 335408**



Audio signal + Horn 90 dB  
(while driving)  
**Item number 335449**

## Options



Horn 103dB  
**Item number 335396**



Emergency stop complete  
**Item number 335601**



Strobe light  
(only while driving)  
**Item no. 335398**



Strobe light  
(continuous)  
**Item no. 335399**



Remote set (**without**  
flippers switch off)  
4 channel, 2,4 GHz  
**Item number 335391**



Remote set (**with**  
flippers switch off)  
4 channel, 2,4 GHz  
**Item number 335643**

## Options



Electromagnetic parking brake T1000  
**Item number OPT0004**



Counterweight (back)  
20kg  
**Item number 335891**



Counterweight (front)  
30kg  
**Item number OPT0044**



Hour tracker  
**Item number 335394**



Antistatic strip  
**Item number OPT0058**



Code lock  
**Item number OPT0068**

## Options



Document holder for steel tiller head supp.  
M1002-0100  
**Item number OPT0053**



Storage system (incl. snap hooks) for steel tiller head supp.  
M1002-0100  
**Item number OPT0482**



Preparation electric hook  
**Item number 335403**



Diagnostic connector  
**Item number 335452**



Ignition key (unequal)  
**Item number OPT0145**



Ignition key 701 (equal)  
**Item number OPT0146**



## Options



On/off rotary switch  
**Item number OPT0016**



Parking floorlabel Ø 60 cm  
**Item number OPT0245**



Customized programming  
*Please indicate specific settings*  
**Item number OPT0170**



Programmer for Curtis  
**Item number M3167**



Frame for 4-wheel waste container  
**Item number OPT0085**



Adaptor for airport/shopping trolley  
**Item number OPT0514**

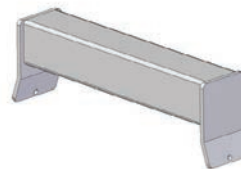
## Options



Strobe light (only while driving)  
**Item no. 336221**



Strobe light (continuous)  
**Item no. 336222**



Welding part for trolley (profile 50x50 mm)  
**Item number OPT0032**



Bolt-on part for trolley (profile 50x50 mm)  
**Item number OPT0033**



Attachment for trolley Caddie/Wanzl  
**Item number OPT0040**



Urgent order purchase  
**Item number SPOED**

## Options



Frame for  
770 l. and 240 l. container  
**Item number OPT0375**



Protective cover  
**Item number OPT0465**

## Batteries and Chargers



Battery Lithium green  
(LiFePO4) 25,6V / 36Ah  
**Item number OPT0106**



Charger (external) for  
Lithium battery, 25,6V / 10A  
**Item number OPT0013**



Wall mounted Lithium  
charger, incl. Lithium  
charger 25,6V / 10A  
**Item number OPT0023**

## Batteries and Chargers



Charging station Lithium  
(5x), incl. Lithium  
charger 25,6V / 10A  
**Item number OPT0029**

## Adapters



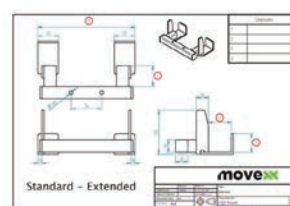
Base part hook 15°  
**Item number H7010**



Base part hook 15°  
(double spring)  
**Item number H7020**

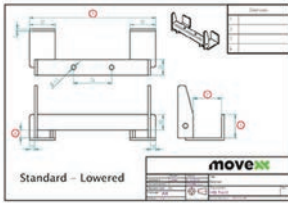


Angle limitation hook 80°  
**Item number OPT0218**

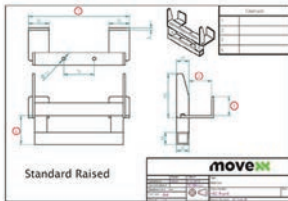


Customized hook  
*Please complete  
corresponding sheet*  
**Item number HA5000**

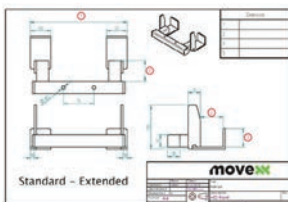
## Adapters



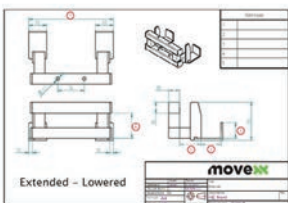
Customized hook (low)  
*Please complete  
 corresponding sheet*  
**Item number HB5000**



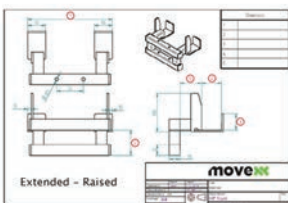
Customized hook (raised)  
*Please complete  
 corresponding sheet*  
**Item number HC5000**



Customized hook  
 (extended)  
*Please complete  
 corresponding sheet*  
**Item number HD5000**



Customized hook  
 (extended/low)  
*Please complete  
 corresponding sheet*  
**Item number HE5000**



Customized hook  
 (extended/raised)  
*Please complete  
 corresponding sheet*  
**Item number HF5000**

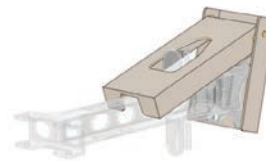


Hook for LKE platform-  
 wagon (type X)  
**Item number H0076**

## Adapters



Hook K-Hartwall dolly  
 (DOS1617/1636, 25°)  
**Item number H0086**



Hook locking system  
 stainless steel  
**Item number OPT0012**



Electric height adjustment,  
 Stroke 100 mm,  
 Actuator 900 N  
**Item number OPT0506**



Electric height adjustment,  
 Sprung, Stroke 100 mm,  
 Actuator 900 N  
 (gas spring 200 N)  
**Item number 336315**



Vacuum hook  
 for stainless steel trolley  
**Item number H0093**



Electric locking module  
 for hook  
**Item number 335887**



## Adapters



Clamping hook (HD)  
(required with  
335968 or 335975)  
**Item number 335482**



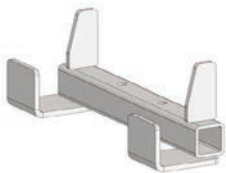
Set 1 (0 - 60mm)  
**Item number 335968**



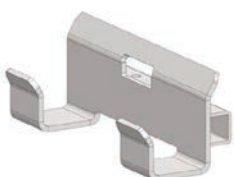
Set 2 (40 - 100mm)  
**Item number 335975**



Tilting clamping hook for  
wooden profile 145x20mm  
Self-aligning connection,  
pivoting angle 15° up/down  
**Item number 335816**

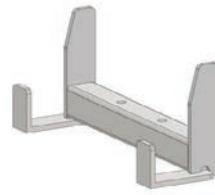


HA270.43.40.0.0  
Hook for 40 mm profile  
(K-Hartwall pallet trolley;  
DOS1870)  
**Item number H0003**

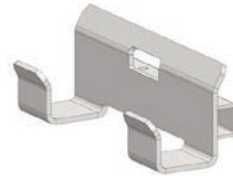


HA245.53.45.15.0  
Hook for 50 mm profile  
(heavy duty)  
**Item number H0004**

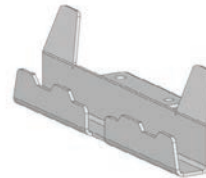
## Adapters



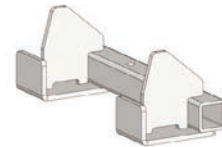
HA250.43.35.0.0  
Hook for 40 mm profile  
**Item number H0051**



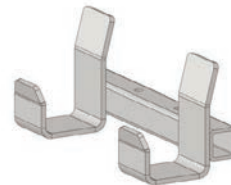
HB245.43.30.5.0  
Hook for 40 mm profile  
**Item number H0054**



HA250.23.27.0.0  
Hook for 20 mm profile  
**Item number H0067**



HD245.10.35.0.50  
Front hook for Hatchery  
trolley (EMKA)  
**Item number H0090**

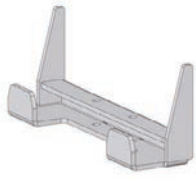


HB245.60.45.30.0  
Hook for FEIL plastic floor  
trolley  
**Item number H0092**

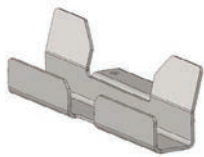


HC250.28.25.0.0  
Hook for 25 mm profile  
**Item number H0094**

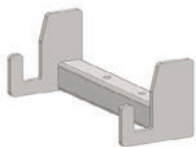
## Adapters



HA250.33.30.0.0  
Hook for 30 mm profile  
**Item number H0095**



HA250.35.30.0.0  
Hook for 30 mm profile  
(furniture trolley)  
**Item number H0097**



HF242.23.30.15.20  
Hook for 20 mm profile  
(hospital logistics)  
**Item number H0116**



HB135.18.20.35.0  
Hook for 15 mm profile  
(K-Hartwell dolly 400x600)  
**Item number H0125**

## Most common spareparts



Battery Lithium green  
(LiFePO4) 25,6V / 20Ah  
**Item number 335474**

## Most common spareparts



Charger (external) for  
Lithium battery, 25,6V / 10A  
**Item number OPT0013**



Battery guide  
(stainless steel)  
**Item number M0482**



Battery connector SB50  
**Item number M0105**



Belly button RED  
**Item number M0121-BBUT**



Switch buttons (2x) green  
**Item number M0121-KNOP-GROEN**



Switch tiller head  
excl. buttons  
**Item number M0121-FLIPPER**

## Most common spareparts



Feather/shaft Throttle  
**Item number M0121-4**



Switch FAST/SLOW  
tiller head green  
**Item number M0121-SPEED-GROEN**



Switch ON/OFF  
tiller head green  
**Item number M0121-AANUIT-GROEN**



Plain sleeve bearing  
Ø8 / 12 x 6, 16 x 2 mm  
**Item number M4038**



Locking pin  
M16 x 1,5 mm  
**Item number M0001**



Torsion spring for hook  
**Item number M0116-SP**

## Most common spareparts



Curtis drive controller  
DC 24V,  
Inom 30A, I<sub>max</sub> 50A  
**Item number M3161**



Carbon brushes (set of 4)  
for Motor 300W  
**Item number M0186**



LED battery indicator  
**Item number M3165**



Cable harness,  
universal Curtis  
**Item number 335406**



Fuse 5A  
**Item number M0506**



Fuse Maxi 40A  
**Item number M0254**

## Most common spareparts



Drive wheel, full rubber  
Black Ø 250 x 80 mm  
**Item number M0248**



Drive wheel  
full rubber, non-marking  
Gray Ø 250 x 80 mm  
**Item number M0115**



Drive wheel, foamed at 2b  
Black Ø 250 x 80 mm  
**Item number M0091**

## Most common spareparts



Drive wheel, foamed at  
2b, gray Ø 250 x 80 mm  
**Item number M0092**



Castor wheel  
Black Ø 80 mm  
**Item number M0013**



# applications



**move**xx  
driven by brain power

Generatorstraat 17-19  
3903 LH Veenendaal  
The Netherlands

T +31 (0)318 519900  
E info@movexx.com  
W www.movexx.com

