



Movexx **BM500R-FFC**
OPTIONS & PARTS
2020 v2

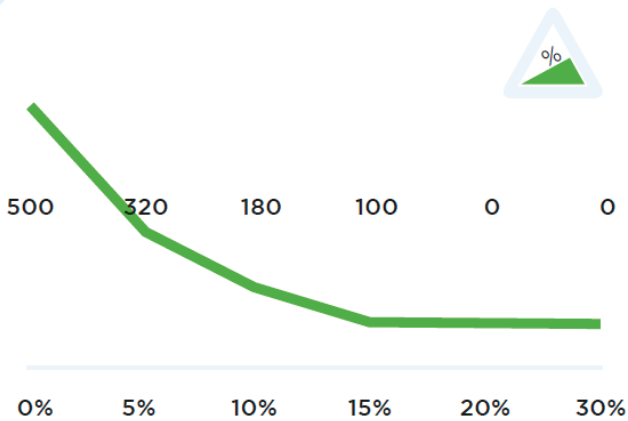
Specifications

Technical details

Frame	Steel, powder coated, RAL9007 (Gray Aluminium)
Drive	24V DC, 300W, 100 rpm
Weight	200 kg (440.9 lbs)
Max. pulling force	400 N
Weight trailer	Max. 500 kg (1102 lbs)
Battery	Built in
Speed Max.	5 km/h (3.1 mph)
Drive wheels	Full rubber, non-marking Ø 250 x 80mm (9.8 x 3.1 in)
Adze height	770-1200 mm (30.3 - 47.2 in)
Folded	770 mm (30.3 in)
Noise level	63,8 dB
To use from	0° C / 40° C (32° / 104° F)
Hook position	Footboard

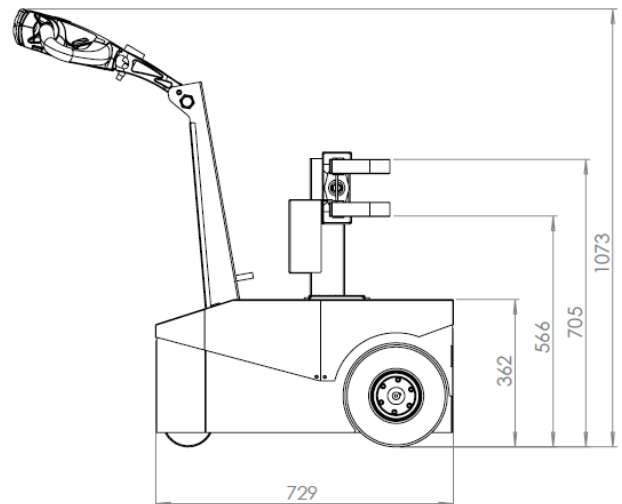
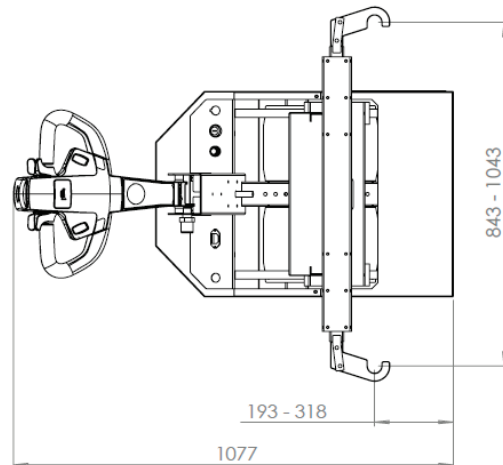
© 2020 Movexx International B.V. The images shown are used for illustration purposes only and may differ from the products indicated. No rights can therefore be derived from it. Printing errors are subjected to change. The datasheet is the confidential product of Movexx International B.V. and no portion of this datasheet may be copied, performed, or redistributed without the express written authority of Movexx International B.V.

Pulling power (in kg)



Measured with a trolley with 2 swivel wheels and 2 fixed castors. Wheel Ø 160 mm.

Dimensions



Standard parts



Motor 300W / 100rpm
(6911393E) with brake
Item number M1033



Battery AGM-VRLA block
24V / 22Ah
Item number M0076-SP



LED battery indicator
(build-in)
Item number M0318



Charger (internal)
AGM battery 24V / 5A
+ external indicator
Item number M0246



Remote control
4 channel, 2,4 GHz
Item number OPT0505



Drive wheel
Full rubber, non-marking
Gray Ø 250 x 80 mm
Item number M0115

Standard parts



Castor wheel
Gray Ø 125 mm
Item number M0120



Adjustable tiller head
Item no M1002-0100



Belly button RED
Item number M0121-BBUT



2 programmable speeds

Options



Extra plug to recharge
the battery
*for on-machine battery
charging*
Item number OPT0001

Options



Horn 90dB for
steel tiller head supp.

M1002-0100

Item number OPT0057



Horn 103dB

Item number OPT0059



Emergency stop complete

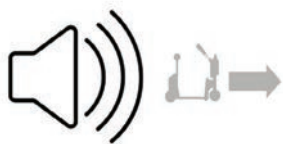
Item number OPT0063



Strobe light for
steel tiller head supp.

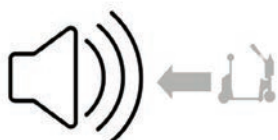
M1002-0100

Item number OPT0065



Audio signal
(while driving)

Item number OPT0253



Audio signal
(driving backward)

Item number OPT0254

Options



Hour tracker

Item number OPT0056



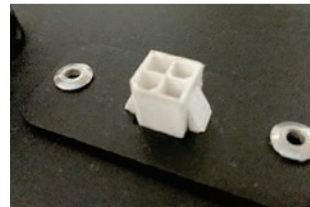
Antistatic strip

Item number OPT0058



Code lock

Item number OPT0068



Diagnostic connector

Item number OPT0270



Ignition key (unequal)

Item number OPT0145



Ignition key 701 (equal)

Item number OPT0146

Options



On/off rotary switch
Item number OPT0016



Parking floorlabel Ø 60 cm
Item number OPT0245



Customized programming
Please indicate specific settings
Item number OPT0170



Programmer for Italsea
Item number D0003



Urgent order purchase
Item number SPOED

Batteries and Chargers



Battery AGM-VRLA block
24V / 22Ah
Item number M0076-SP



Charger (internal) for
AGM battery, 24V / 5A
+ external indicator
Item number M0246

Most common spareparts



Battery AGM-VRLA block
24V / 22Ah
Item number M0076-SP



Charger (internal)
AGM battery 24V / 5A
+ external indicator
Item number M0246



Battery guide
(stainless steel)
Item number M0482

Most common spareparts



Battery connector SB50
Item number M0105



Belly button RED
Item number M0121-BBUT



Switch buttons (2x) green
Item number M0121-KNOP-GROEN



Switch tiller head
excl. buttons
Item number M0121-FLIPPER



Feather/shaft Throttle
Item number M0121-4



Switch FAST/SLOW
tiller head green
Item number M0121-SPEED-GROEN

Most common spareparts



Switch ON/OFF
tiller head green
Item number M0121-AANUIT-GROEN



Plain sleeve bearing
Ø8 / 12 x 6, 16 x 2 mm
Item number M4038



Locking pin
M16 x 1,5 mm
Item number M0001



Coverplate tiller head
Item number M0898



Italsea drive controller
in 24V / 36 bat,
in 10A / I_{max} 45A
Item number M1122-SP



Carbon brushes (set of 4)
for Motor 300W
Item number M0186

Most common spareparts



LED battery indicator
(build-in)
Item number M0318



Cable harness complete
Item number M1127-M050



Chassis cable charger
Item no M0158-Stekker



Fuse 5A
Item number M0506

Most common spareparts



Fuse Maxi 40A
Item number M0254



Drive wheel
Full rubber, non-marking
Gray Ø 250 x 80 mm
Item number M0115



Castor wheel
Gray Ø 125 mm
Item number M0120

applications



moveXX
driven by brain power

Generatorstraat 17-19
3903 LH Veenendaal
The Netherlands

T +31 (0)318 519900
E info@movexx.com
W www.movexx.com

