

movexx
driven by brain power



Movexx **AGV1000**
PARTS & OPTIONS
2020 v2



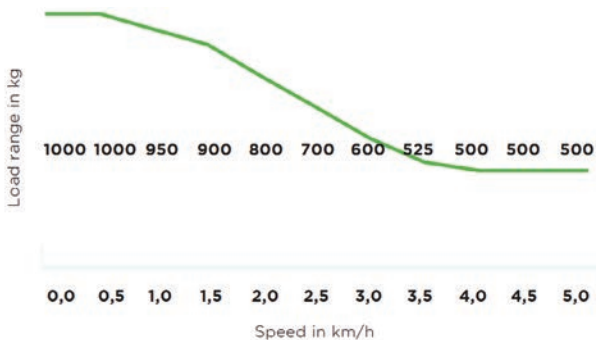
Specifications

Technical details

Version	Uni-directional AGV
Application	Pulling of trolleys
Max. pulling force	800 N
Trolley weight	Maximal 1000 kg (2204.5 lbs)
Speed	Stepless to 4,7 km/h (2.9 mph)
Corner speed	Maximal 1,0 km/h (0.6 mph)
Corner radius	Minimal r=1000 mm (39.4 in)
Navigation	Optical with RFID-tags
Drive	300 W, 24 VDC, 100 rpm
Traction wheels	Full rubber Ø 250 x 80 mm (9.8 x 3.1 in)
Brake	Electric
Parking	brake Electromagnetic
Energy supply	Exchangeable battery pack
Back-Up supply	B-U batt. 24 V 1,2 Ah
Frame	Steel powder coated
Weight	150 kg (331 lbs) with battery
Noise level	68,5 dB
To use from	0° C / 40° C (32° / 104° F)

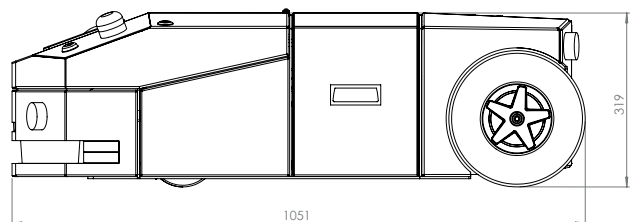
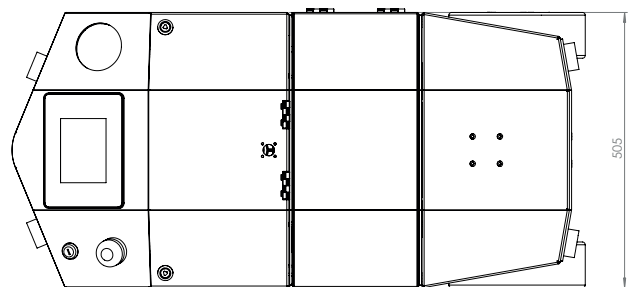
© 2020 Movexx International B.V. The images shown are used for illustration purposes only and may differ from the products indicated. No rights can therefore be derived from it. Printing errors are subjected to change. The datasheet is the confidential product of Movexx International B.V. and no portion of this datasheet may be copied, performed, or redistributed without the express written authority of Movexx International B.V.

Pulling power (in kg)



Measured with a trolley with 2 swivel wheels and 2 fixed castors. Wheel Ø 160 mm.

Dimensions



Standard parts



Motor 300W / 100rpm
(6911393E) with brake
Item number M1033



Charger (external)
Lithium battery 25,6V / 10A
Item number OPT0013



Battery Lithium green
(LiFePO4) 25,6V / 36Ah
Item number OPT0106



Drive wheel, full rubber
Black Ø 250 x 80mm
Item number M0248



Wheel Ø 125 x 40mm
Gray, electrical conductive
Item number M2975



Light vision module
Two front white LED's;
two rear red LED's
Item no. OPTAGV0009

Standard parts



Cable remote with
emergency stop
*Forward, backward, left
right and emergency stop*
Item number OPT0104



Safety scanner
RSL420-S/CU416-5
*with 10 individual switch-
able field pairs. Maximal
range 3m at 220°*
Item number M0978



7" colour display +
RFID & route module
*for programming options
for RDIF-tags & routing*
Item no. OPTAGV0001



Flashlight+console compl.
Console start/stop.
*Flashlight: orange, green,
red and blue*
Item no. OPTAGV0014

Options



UPGRADE:
(only with new machines)
Drive wheel full rubber,
non-marking
Gray 2x Ø 250 x 80mm
Item no. OPTAGV0010

Options



Blue safety spot
Item number M0961



Sound & speech module
Item no. OPTAGV0019



Wifi module
for wireless LAN
Item no. OPTAGV0013



Preparation electric hook
Item number OPT0143



Ignition key 701 (equal)
Item no. OPTAGV0011

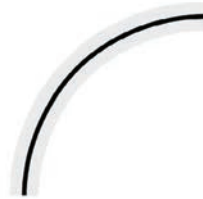


AGV track straight
b=160mm l=25m PVC
Item no. M2731-0019

Options



AGV Track corner 45°
b=160mm r=1m PVC
Item no. M2731-0020



AGV Track corner 90°
b=160mm r=1m PVC
Item no. M2731-0021



Sticker for creditcard TAG
*Special sticker for sticking,
protecting & covering TAG's*
Item no. M0974-0001



RFID tag 86x54mm 0.8mm
(creditcard)
*Radio Frequency ID tag
to control AGV*
Item no. M0974

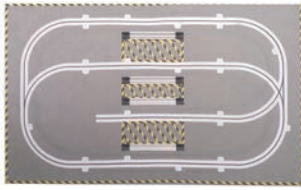


RFID tag, papercard
self-adhesive (80x50mm)
Radio Frequency ID
Item no. M2803



RFID tag, Ø 20 x 2,8 mm
Radio Frequency ID
Item no. M0988

Options



Demo floor, gray (6,5x3 m)
Plastic tile floor with
slow/fast RFID-tags
Item no. OPTAGV0000



Positioning rail (2,35m)
palletcart, for exact posi-
tioning palletcart over the
AGV track
Item no. OPTAGV0015



GS-Fleetcontrol AGV
Traffic Managent,
Manage & controls
max. 99 AGV vehicles
Item no. OPTAGV0020



GS-FLleetcontrol
ERP interface, Data inter-
face between traffic server
software & customer ERP
Item no. OPTAGV0021

Batteries and Chargers



Charger (external) for
Lithium battery, 25,6V / 10A
Item number OPT0013



Wall mounted Lithium
charger, incl. Lithium
charger 25,6V / 10A
Item number OPT0023



Charging station Lithium
(5x), incl. Lithium
charger 25,6V / 10A
Item number OPT0029



UPGRADE:
(only with new machines)
Wall mounting for charger
(for AGM or Lithium)
Item number OPT0261

Batteries and Chargers



Battery Lithium green
(LiFePO4) 25,6V / 36Ah
Item number OPT0106

Adapters

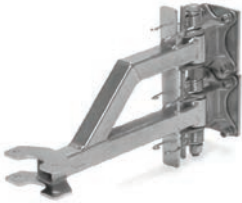


Base part hook 90°
Item number H7030

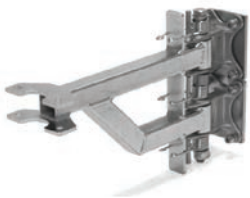
Adapters



Base part hook 90°
(double spring)
Item number H7040



Base part HD hook 90°
(lowered)
Item number H7070



Base part HD hook 90°
(raised)
Item number H7080



Base part hook 90°
(manual controle)
Item number H7090



Hitch ball Ø 50mm
(incl. adapter)
Item number H0068



Hook for LKE platform-
wagon (type X)
Item number H0076

Adapters



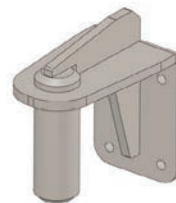
Hook K-Hartwall dolly
(DOS1617/1636, 90°)
Item number H0083



Electric disconnecting
module for hook (AGV)
*Stroke: 100 mm, for auto-
matic undocking of the
trolley*
Item no. OPTAGV0003



Pen for drawbar Ø16
Item number H0064



Pen for drawbar Ø35
Item number H0144



Towbar for Movexx
e-frame
(suitable for OPT0067)
Item number H0070



Pen for drawbar Ø15
Item number H0071

Adapters



Pen for drawbar Ø10
Item number H0072



Folding hook Ø16
Item number H0128-D16



Folding hook Ø20
Item number H0128-D20



Folding hook Ø25
Item number H0128-D25



Folding hook Ø27
Item number H0128-D27



Folding hook Ø32
Item number H0128-D32

Adapters



Folding hook Ø35
Item number H0128-D35



Hook (quick connection)
AGV semi-automatic
Item number H5123



Hook load recognition
module AGV
Item no. OPTAGV0007

Most common spareparts



Battery Lithium green
(LiFePO4) 25,6V / 36Ah
Item number OPT0106



Charger (external) for
Lithium battery, 25,6V / 10A
Item number OPT0013

Most common spareparts



Battery guide
(stainless steel)
Item number M0482



Battery connector SB50
Item number M0105



Torsion spring for hook
Item number M0116-SP



Safety scanner cleaning set
Item number M0978-6



Italsea drive controller
in 24V / 36 bat,
in 10A / I_{max} 45A
Item number M1122-SP



Carbon brushes (set of 4)
for Motor 300W
Item number M0186

Most common spareparts



Fuse 5A
Item number M0506



Fuse Maxi 40A
Item number M0254



Drive wheel, full rubber
Black Ø 250 x 80 mm
Item number M0248



Drive wheel
full rubber, non-marking
Gray Ø 250 x 80 mm
Item number M0115



Wheel Ø 125 x 40mm
Gray, electrical conductive
Item number M2975

applications



moveXX
driven by brain power

Generatorstraat 17-19
3903 LH Veenendaal
The Netherlands

T +31 (0)318 519900
E info@movexx.com
W www.movexx.com

